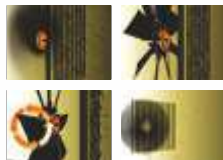


# SUGARCANE HARVESTER - Shaktiman 3737



#### ADVANCED TRACKING SYSTEM

GPS enhancement provides SMS & web supervisor features which facilitate location of harvester and information on performance data



#### AUTO CLEANING SYSTEM -

This technology helps in cleaning the radiator at regular interval to remove the dust which can choke the radiator fins. Maintains engine temperature within limits.



#### CONTROL PANEL -

Cabin has electronic controller which displays key performance parameters like:

- Engine temperature
- Hydraulic oil level & temperature
- Fuel level
- Battery voltage etc.

World's Largest Manufacturer of Rotary Tiller

# SUGARCANE HARVESTER - Shaktiman 3737

Engine		Crop divider	
Make	Cummins	Distance Between the Tips	1100 mm / 43.3 inch
Series	B 5.9	Spiral Angle Degree	30°-32°
Power	173 HP	Height Adjustment	Hydraulic
Cylinder Volume	5.9 Liters	Lower Section	Hardened Shoe
Number of Cylinder	6	Feed rollers	
Aspiration	Turbo/After Cooler	Number of Rollers	11
Transmission		Number of Rollers on the Roller Train	8
Type	Hydrostatic	Drive	Hydraulic & Reversible
Travel Speed	Variable up to 15 km/hour	Upper Rollers	Floating
Capacity		Chopper	
Fuel Tank	208 Liters	Number of Knives per Drum	3
Hydraulic Oil Tank	130 Liters	Deflector Plates	Adjustable
Tyres		Knock down roller	
Front	10.5 / 65-16, 14 PR	Height	Adjustable
Rear	16.9 x 28, 12 PR	Angle Degree	50°
Topper		Extractor	
Height Variation(mm / inch)	1050-2800 / 41.3-110.2	Number of Blades	3
Height Adjustment	Hydraulic	Hood	Directional
		Elevator	
		Drive	Hydraulic & Reversible
		Turning Angle	168°
		Weight	8300 Kg

The company reserves absolute rights to modify the specifications of machine and components therein without any prior notice.

\*Accessories shown are not part of standard equipment.



#### ROOF TOP AC

Efficient Air Conditioning, Highly comfortable to operator resulting in More Productivity



#### FAN ASSEMBLY

Removes impurities like dirt, mud etc. from the canes before delivering into container. This dynamically balanced fan assembly ensures clean canes to sugar factories resulting in more recovery



#### STABILITY -

It has rear tyres of 16.9 x 28 inch size which offers maximum stability and low soil compaction to facilitate working in challenging conditions.



#### ENGINE ASSEMBLY

Six cylinders 174 HP water cooled diesel engine designed to perform optimum



#### DOUBLE CROP DIVIDER

This comes as a standard feature ensuring harvester takes cane from targeted row only & deflects cane from adjoining row to avoid chocking



#### OPERATOR CABIN -

Air conditioned spacious cabin has comfortable driver seat with height adjustment & joy stick controls for individual functions.



#### 24X7 AVAILABILITY OF SERVICE



#### HYDRAULIC SYSTEM -

Robust hydraulic system run by efficient hydraulic motors & pumps ensuring flawless functioning of harvester



#### (MAIN)BASE CUTTER -

Heavy duty adjustable cutter cuts cane efficiently, both the blade holders rotate in opposite direction which cut the cane at ground level



#### VISIBILITY-

Curved profile of engine enclosure behind operator enable better rear view for driver to align with infielder or turning.



Tirth Agro Technology Pvt. Ltd.

"SHAKTIMAN", Survey No.-108/1, Plot No. B, NH-27, Nr. Bharudi Toll Plaza, Bhunava (Village), Taluka: Gondal, Dist.: Rajkot. State: Gujarat- INDIA, Pincode-360311

☎ +91 (02827) 234567, 270537 📠 +91 (02827) 270457

✉ info@shaktimanagro.com, 🌐 www.shaktimanagro.com, CIN: U72900GJ2000PTC 038435



Scan to Visit Website



KRISHI UDAAN @ Pune

World's Largest Manufacturer of Rotary Tiller